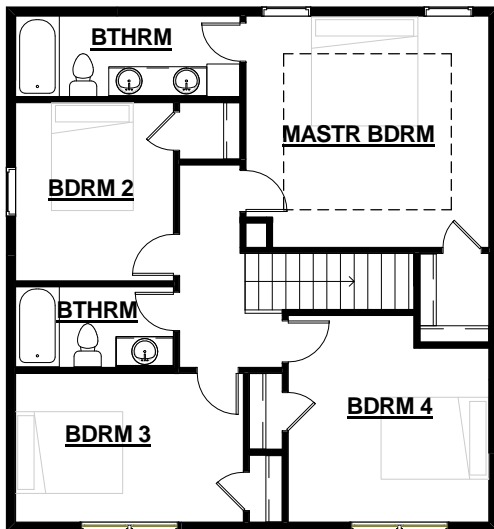
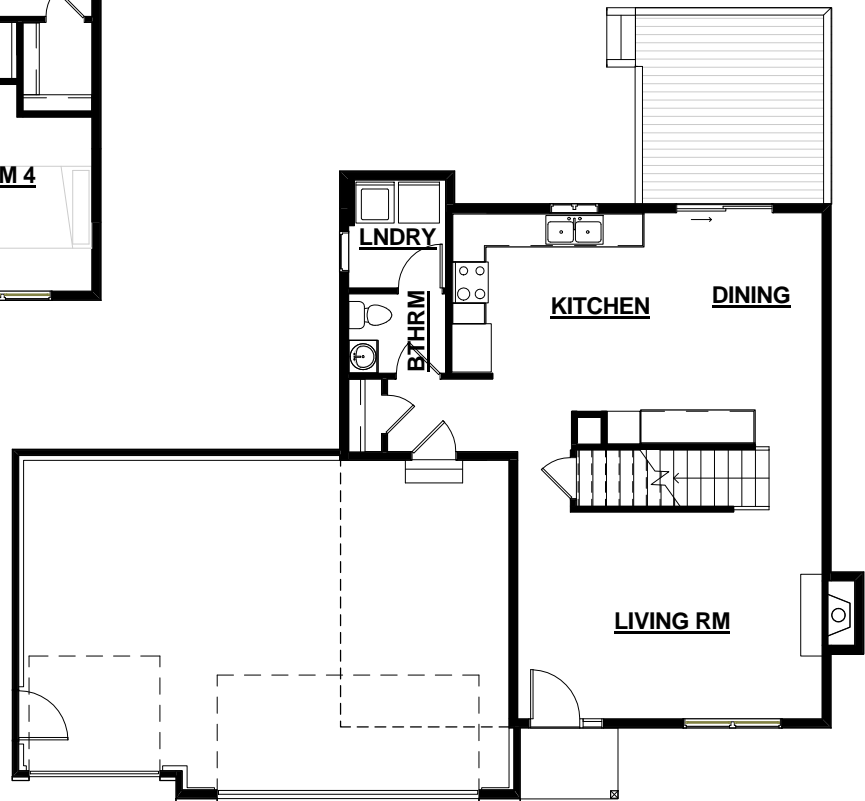


Plan D4

Main Floor: - 804 SF
 Second Flr: - 961 SF
 Total: - 1765 SF
 Bedrooms: - 4
 Bathrooms: - 2.5
 Width: - 52'-0"
 Depth: - 38'-4"
 Basement: - 690 SF Finished



SECOND FLOOR



MAIN FLOOR